



**first
national**
REAL ESTATE

| **Druitt & Shead**



43 Queenscliffe Road Doubleview WA

4 🛏 2 🚿 2 🚗

Everything about this 3 kitchen, 4 bed, 2 bath home has been perfectly planned by a creative couple who love to cook and entertain and who designed their dream home to maximise the stunning true DOUBLEViews to the ocean in one direction and Perth in the other.

The upstairs indoor/outdoor living area is brilliantly designed with sweeping ocean views. Bifold windows that open entirely or close on windy/hot days, complete with robust commercial oven and outdoor kitchen with lounge area opposite.

The master suite is up here too enjoying those ocean views. It has a generous WIR and ensuite with dual basins.

There is wide open living space with timber floors and

Building Size : 449 sqm
Land Size : 827 sqm
View : <https://www.druitt.com.au/sale/wa/northern-suburbs/doubleview/residential/house/6339660>



Rob Druitt
08 9446 5222



Druitt & Shead

43 Queenscliffe Rd

Doubleview

Block Size 827sqm

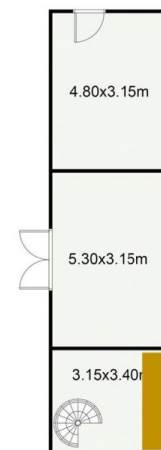
Building 449sqm

Ground 226 sqm (Living 174, Garage 37, Porch 11, Balcony 4)

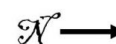
First Floor 223 sqm (Living 149, Balcony 73)



First Floor



Undercroft



* Guide only — for illustrative purposes